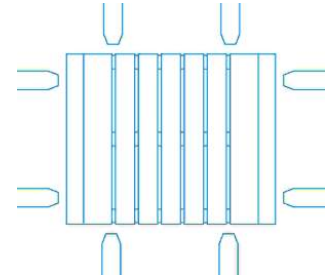
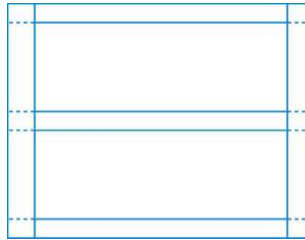
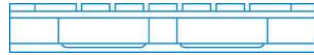
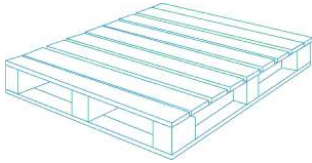


Wooden Pallet

1200 x 1000 mm

Overview

This industry standard 1200 x 1000 mm quality wooden platform is ideal for the transport of goods in many industries including Consumer Goods, Fresh Food, Retail, Manufacturing and Automotive.



Features and Benefits

Reduce product damage and increase load stability through robust construction

Increase operational productivity through consistent specification – pallet is suitable for automated production and warehousing facilities

Enhance efficiencies during storage and transport with consistent 4-way entry design ensuring compatibility with all standard equipment

Reduce health & safety risks to the workforce – quality materials ensure pallets can be handled safely

Forms the base for CHEP Collars and Cages

Container compatible

Specifications

Dimensions - in millimeters

| | Length | Width | Height |
|----------|--------|-------|--------|
| External | 1200 | 1000 | 166 |

Window / Pallet entry - in millimetres

| | Width | Height |
|--------------|-------|--------|
| 1200 mm side | 390.0 | 95.0 |
| 1000 mm side | 357.0 | 120.0 |

Nominal Capacity and Weight

| | |
|-------------|--------|
| Tare Weight | 28 kgs |
|-------------|--------|

Configuration and Stacking

CHEP recommends a maximum rating of 1000 kgs as a safe working load.

Notes

Materials

Timber (SA Pine)

Recommended Use / Applications

Fast Moving Consumer Goods, Beverage, Produce, Hardware, and Automotive industries

CHEP Code

8001