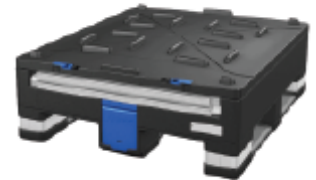
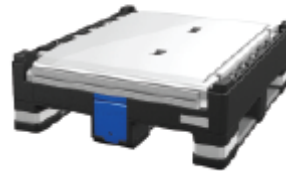
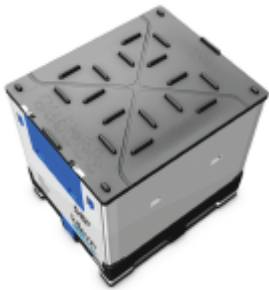


**Überblick**

The Pallecon iCONIC has been specifically designed to move products intercontinentally as efficiently and sustainably as possible. Suitable for the transportation of dry and liquid products, the iCONIC features four-way pallet access and a sloped pallet base to allow for maximum product decant with minimal residual waste.



**Funktionen und Vorteile**

- Capacity for aseptic liners to hold up to 1040l of product
- Large drop doors, easy-access valve operation and sloped pallet base for efficient fill, decant and handling
- Stainless steel pallet corner reinforcement ensures container durability
- Optional sight glass for product level check
- Tamper-evident facility locks from cover to base
- Highly durable and suitable for multiple uses
- Optimised storage - up to 20% additional product per-pallet space compared with drums
- Allows up to 100% additional product storage-when stacked
- Fast and more efficient fill and decant process compared-with drum or bottle-in-cage packaging
- Can be stacked up to 7 units high to maximise-warehouse storage space and transportation efficiency
- Manufactured from fully recyclable materials to create a-sustainable product

**Spezifikationen**

**Maße – in Millimetern**

	Länge	Breite	Höhe
Außen	1200	1000	1180
Gefaltet	1200	1000	375

**Nominale Kapazität und nominales Gewicht**

Maximale Kapazität	1040 ltrs
Maximales Ladegewicht	7500 kg
Tare Weight	103 kg

**Dynamic Load:** 3000kg

**Tragfähigkeit und Stapelung**

Gestapelte Schichten	3
----------------------	---

**Return (7 Stack):**- Dimensions 1200mm x 1000mm x 2625mm

**Tare Weight:** 824kg

**Temperaturbeständigkeit**

Minimum / Maximum	-20 °C / 40 °C
-------------------	----------------

**Kommentare**

**Materialien**

Panel, lid and drop door - Polypropylene and-Stainless Steel

**Empfohlene Verwendung / Applikationen**

- Food** – Dairy, sauces, flavourings and liquid ingredients
- Cosmetics** - Lipstick, creams, lotions, foundation,-mascara, eau de toilette, evening primrose oil,-balms, perfume
- Toiletries** - Shampoo & conditioner, gels, bath oils,-toothpaste, soap, mouthwash, deodorant, wet wipe-liquid,-balms, coconut oil
- Non-hazardous liquids**