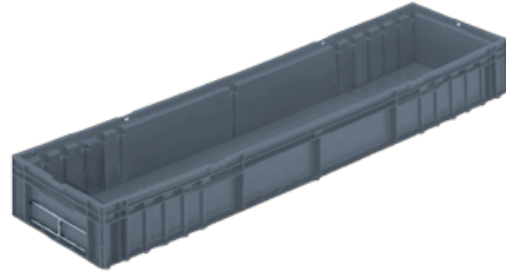


Overview

Complete packaging solution that can reduce costs at every stage in the supply chain. From management to warehousing, distribution and sequencing, to inventory management and in-plant logistics, the GALIA box range offers high efficiency and performance.



Features and Benefits

Features:

- Robust & strong design for heavy-duty applications
- Highly visible industry-standard label holders
- Distinctive grey colour RAI 7015

Benefits:

- Consistent specifications are suitable for automated production and line-side racking
- Modular design in multiple size formats prevent the need for re-packing
- Can be delivered on a range of pallet dimensions

Specifications

Dimensions - in millimeters			
	Length	Width	Height
External	1196	328	150
Internal	1147	275	132

Nominal Capacity and Weight	
Maximum capacity	42 ltrs
Maximum load weight	15 kgs
Tare Weight	3700 kgs

Configuration and Stacking	
Stacked layers in transit when open	3
Stacked layers in transit when folded	3
Stacked layers for storage when open	6
Stacked layers for storage when folded	6

Temperature Range	
Minimum / Maximum	-20 °C / 40 °C

Notes

- Materials**
- HDPE
- Performance and Standards**
- GALIA Standard
- Recommended Use / Applications**
- Wiring Harnesses