

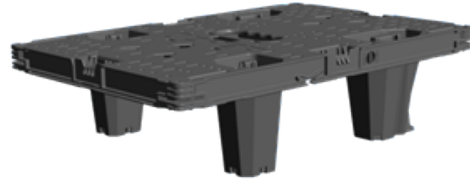
## Overview

The 1/6 Pallet is a specifically designed footprint pallet for use in a retail store for off-location promotional displays and replenishment in-aisle.

As a one touch solution, this platform facilitates the movement of goods from manufacturer to retailer.

The superior design enables supply chain movements as a singular unit moved by forklift and pallet jack or en masse via the assistance of timber pallets (slaving of six 1/6 pallets onto one CHEP Australian Wooden Pallet).

Its footprint can optimise transport efficiencies – the footprint of six 1/6 Pallet is equivalent to one CHEP Australian Wooden Pallet.



## Features and Benefits

Reusable, retail-ready platform for one-touch off-location promotional displays or in-aisle replenishment

Ergonomic handle for easy pick up

Nestable legs for great storage and transport logistics

Patented "Blue-Click" system for secure Point-of-Sale (POS) attachment and transport of goods

Stretch wrap groove to anchor the start of pallet wrapping

Ribbed corner design to better support POS display and pallet wrap retention

## Specifications

### Dimensions - in millimeters

	Length	Width	Height
External	581	386	150

### Nominal Capacity and Weight

Maximum load weight	200 kgs
Tare Weight	2,045 kgs

### Configuration and Stacking

Maximum number of stacked layers under load, in a warehouse is 1.

Maximum number of stacked layers when empty, in a warehouse is 22.

### Temperature Range

Minimum / Maximum	-20 °C / 40 °C
-------------------	----------------

## Notes

### Materials

Injection Moulded Polypropylene

### Disclaimer

Specifications are subject to variation and may be changed without notice. The platform shown here represents the latest version. For some platforms, earlier versions are sometimes supplied when the latest are not available.