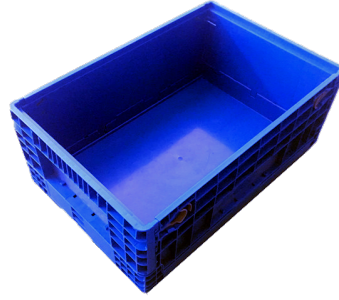


Overview

CHEP China not only provides the best standardized packaging for auto parts transportation, but also the sophisticated management integrated solution can save the supply chain cost. From warehousing, distribution, sorting to inventory management and inbound logistics, CHEP standardized packaging solution plays a vital role in improving the efficiency of auto supply chain. In addition, different specifications are required due to the different types of parts alongside the production line. Unitized design allows the packaging with different specifications to be delivered directly to the line without repacking and additional stacking. Using standardized packaging can eliminate the auxiliary packaging materials such as wrap film, packaging tape and paper angle protector, easy for single operation, improve the efficiency for lineside feeding.



Features and Benefits

Features?

Ergonomic design, convenient for handling & transportation
 Products are designed to be stronger, the structure is stable and durable
 Specifications are designed to match the production line
 Modular design allows multiple sizes of standard packaging to stack
 Simple and stable locking structure makes it easy to open and fold
 Good product compatibility, packaging can be used in general, can be stacked with domestic main streams of small crates

Benefits:

The packaging is designed to be stronger to guarantee the safety of components inside during transportation
 High foldable ratio can save the cost of empty container transportation and storage
 Recyclable, in order to reduce the costs for clients, improve packaging safety, standardization and environmental protection
 Compared with one-way package, it will not be affected or damaged during raining season, sea shipment and different season conditions
 Can be directly used on production line, reduce the cost of packaging, keep the working environment in clean and good condition
 The label clip becomes easier to install according to customer's requirement, and flexible to replace
 The packaging cover can be provided according to the customer's requirement

Specifications

Dimensions - in millimeters

	Length	Width	Height
External	600	400	230
Internal	543	360	212

Collapsed height(mm): 80.5

Nominal Capacity and Weight

Maximum load weight	20 kgs
Tare Weight	2.81 kgs

Configuration and Stacking

Foldable ratio 3.2:1 Units/pallet – Loading ? 20 Units/pallet - Empty return ? 65

Temperature Range

Minimum / Maximum -20 °C / 60 °C

Notes

Materials

PP