

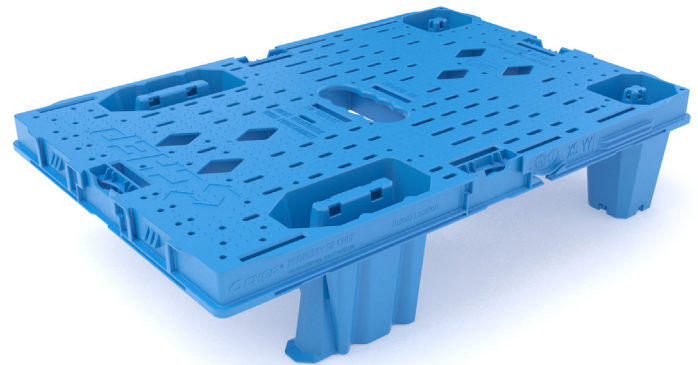
Quarter Pallet Display Platform

P0604B plastic

600 x 400mm

Description

This reusable, retail-ready display platform is ideal for promotional use, enhanced product visibility and easy replenishment at point of sale. It is pooled and serviced throughout CHEP's network of service centres, facilitates co-packing and cross-docking across the supply chain, and promotes a more sustainable use of natural resources.



Features and benefits

Robust integral construction

- + Designed for optimum strength/weight ratio utilising unique ribbing structure
- + Improved foot design provides additional strength and stability for safe handling of valuable loads
- + No nails, sharp edges or splinters and therefore no risk of loose components. Improves conditions for product integrity across the supply chain.



www.tuv.com
ID 0000042606



Certified holder of the German Safety (GS) Mark

- + Single-piece injection moulding with strong structural integrity makes repairs virtually unnecessary

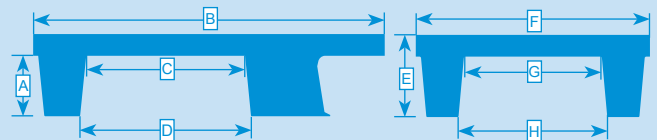
Designed to offer the highest hygiene standard

- + Water resistant, so it can be washed or steam-cleaned
- + Smooth surfaces and the absence of dead pockets mean no moisture, dust or liquid build-up. The risk of cross-contamination is reduced, making this the ideal pallet for hygienic areas and clean rooms.

Warning: Please DO NOT rack unless a carrier EU pallet is used. Testing should always be completed for use on automated systems due to the bespoke nature of each set-up. CHEP does not recommend the use of this pallet in direct contact with unpacked foodstuffs.

Document version: 2 – 07/2016 (replaces 1 – 11/2015)

Specifications

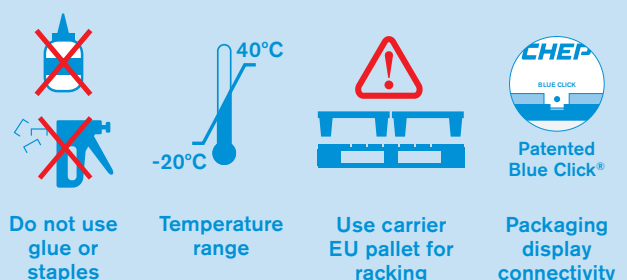
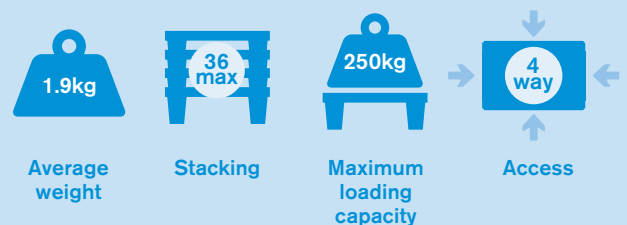


DIMENSIONS AND TOLERANCES (mm)								
Detail	A	B	C	D	E	F	G	H
Nominal	103	599	271	291	140	399	235	253
Minimum	102	594	269	289	139	396	233	251
Maximum	104	604	273	293	141	402	237	255

Materials and compliance

Made of strong 100% recycled polypropylene (PP). Product and/or components comply with ISO 8611, ISO 2234, ISO 6780 and ISO 2248 standards. This pallet has been tested by Fraunhofer Institute of Materials Flow and Logistics and is GS approved by MPA.

Handling



Environmentally friendly

- + CHEP's pooling network reduces packaging waste and the overall impact on the environment
- + Packaging display materials are easy to dismantle for reuse or recycling at the end of their lifetimes
- + This display platform is certified carbon-neutral and is 100% recyclable at the end of its long service life



Ideal for in-store display

- + Boosts sales and brand recognition thanks to higher product visibility and improved availability
- + Reduces overall cost for displayed product thanks to easy replenishment and minimal product damage
- + Increases brand exposure and revitalises low-performing shelf zones, while maximising product sales across the facing area
- + Integrated inner and outer Blue Click® connectivity aids promotional and replenishment preparation
- + Integrated slots for the assembly of 2 x 1/8 separate promotional display packaging units

Consistent quality

- + Dimensional accuracy makes it suitable for automated production processes, minimising product damage and reducing downtime
- + Every pallet is carefully inspected and serviced to deliver improved conditions for health and safety

Colour coded blue

- + The distinctive CHEP blue colour ensures that our pallets can be identified easily

Equipment compatibility and handling

- + Can be used with all standard handling equipment – ideal for cross-docking across the supply chain
- + Fully stackable and improved nestability – 59% less storage and transport space is used
- + Four-way entry for easy access from multiple sides
- + Incorporated stretch-wrap retainer for unit load wrapping
- + Ergonomic handle holes for safe handling

Important: CHEP pallets and containers always remain the property of CHEP and can never be legally bought or sold. CHEP reserves the right to change any of the above information without prior notice. For further information, visit www.quarterpallet.com or contact your local representative.



Wheeled Display Platform-Dolly D0604C plastic 600 x 400mm



A Brambles Company

Description

This reusable, retail-ready, wheeled display platform is ideal for promotional use, enhanced product visibility and easy replenishment at point of sale. It is pooled and serviced throughout CHEP's network of service centres, facilitates co-packing and cross-docking across the supply chain, and includes a RFID track-and-trace device for effective goods and asset control. It comes fitted with a brake for enhanced safety from the production line to the shop floor.



Features and benefits

Ideal for in-store display

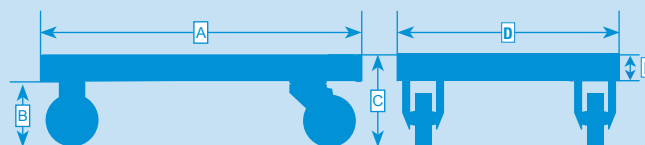
- + Boosts sales and brand recognition thanks to higher product visibility and improved availability
- + Reduces overall cost for displayed product thanks to easy replenishment and minimal product damage
- + Integrated inner and outer Blue Click® connectivity connects to retail-ready packaging solutions, making replenishment easy
- + Increases brand exposure and revitalises low-performing shelf zones, while maximising product sales across the facing area
- + Ideal for the steady display of one or various SKUs on one or two separate retail-ready packaging units

Designed to offer the highest hygiene standard

- + Water resistant, so can be washed and cleaned
- + Smooth surfaces and the absence of dead pockets mean no moisture, dust or liquid build-up. The risk of cross-contamination is reduced, making this the ideal pallet for hygienic areas and clean rooms.

Warning: Please DO NOT rack unless a suitable carrier EU pallet and adaptor nesting tray are used. Testing should always be completed for use on automated systems due to the bespoke nature of each set-up. CHEP does not recommend the use of this pallet in direct contact with unpacked foodstuffs.

Specifications



DIMENSIONS AND TOLERANCES (mm)					
Detail	A	B	C	D	E
Nominal	599	125	165	399	40
Minimum	597	121	162	397	39
Maximum	600	126	168	400	41

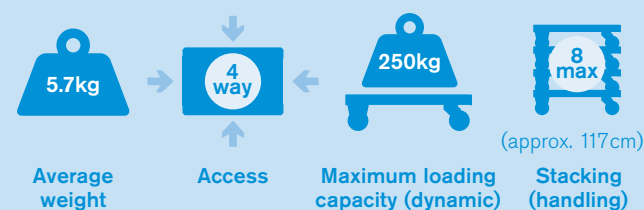
Materials and compliance

Wheels: two fixed wheels in grey and two self-centring swivel wheels in blue. All wheels made of rubber outer and PA (polyamide) inner.

Top deck: grey polypropylene (PP)

Frames and brake: galvanised and zinc-plated steel

Handling



Design standards

- + EN 12674 (overall performance)
- + ISO 8611-1/2/3 (load-bearing/durability)
- + ISO 22878:2004 (wheel performance)
- + ISO 2234 (stacking)
- + ISO 10531 (stability)
- + ASTM 4728 (vibration resistance)
- + ISTA 3E (performance with packaging)



Mobility and noise control

- + Full operational mobility means virtually no need for manual handling equipment
- + Fitted with self-centring wheels and an ergonomic brake for enhanced safety across the supply chain to the store
- + NAS-Piek approved wheels reduce noise – ideal for out-of-hours delivery to residential areas

Equipment compatibility and handling

- + Can be used with all standard handling equipment – ideal for cross-docking across the supply chain
- + Compatible accessories and EU carrier pallet available
- + Fully stackable, with improved nestability for a more efficient use of storage and transport space. Stacks of up to 16 unloaded pallets can be pushed manually. Stacks of up to eight pallets can be fork-lifted and, if shrink-wrapped into pairs or groups of four, loaded onto trucks for transportation.
- + Four-way entry for easy access from multiple sides
- + Incorporated stretch-wrap retainer aids unit load wrapping
- + Ergonomic handle holes for safe handling
- + Compatible with standard plastic crates and beverage trays

Robust integral construction

- + Designed for optimum strength/weight ratio utilising unique ribbing structure
- + Improved wheel design provides additional strength and stability for safe handling of valuable loads
- + No sharp edges or splinters so no risk of loose components – increases product integrity across the supply chain
- + Structural integrity makes repairs virtually unnecessary

Environmentally friendly

- + CHEP's pooling network reduces packaging waste and the overall impact on the environment
- + Packaging display materials are easy to dismantle for recycling at the end of their lifetimes

Important: CHEP pallets and containers always remain the property of CHEP and can never be legally bought or sold. CHEP reserves the right to change any of the above information without notice. For further information, please visit www.quarterpallet.com or contact your local representative.