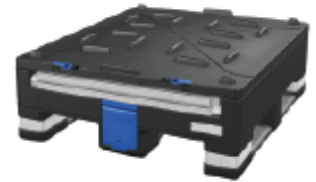
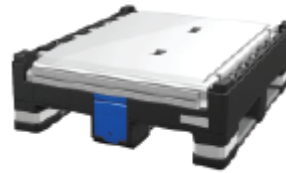
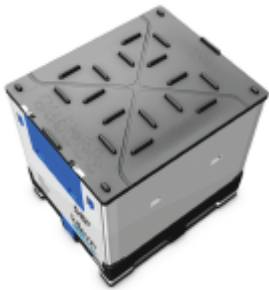


**Overview**

The Pallecon iCONIC has been specifically designed to move products intercontinentally as efficiently and sustainably as possible. Suitable for the transportation of dry and liquid products, the iCONIC features four-way pallet access and a sloped pallet base to allow for maximum product decant with minimal residual waste.



**Features and Benefits**

- Capacity for aseptic liners to hold up to 1040l of product
- Large drop doors, easy-access valve operation and sloped pallet base for efficient fill, decant and handling
- Stainless steel pallet corner reinforcement ensures container durability
- Optional sight glass for product level check
- Tamper-evident facility locks from cover to base
- Highly durable and suitable for multiple uses
- Optimised storage - up to 20% additional product per-pallet space compared with drums
- Allows up to 100% additional product storage-when stacked
- Fast and more efficient fill and decant process compared-with drum or bottle-in-cage packaging
- Can be stacked up to 7 units high to maximise-warehouse storage space and transportation efficiency
- Manufactured from fully recyclable materials to create a-sustainable product

**Specifications**

**Dimensions - in millimeters**

	Length	Width	Height
External	1200	1000	1180
Folded	1200	1000	375

**Nominal Capacity and Weight**

Maximum capacity	1040 ltrs
Maximum load weight	7500 kgs
Tare Weight	103 kgs

**Dynamic Load:** 3000kg

**Configuration and Stacking**

Stacked layers	3
----------------	---

**Return (7 Stack):-** Dimensions 1200mm x 1000mm x 2625mm

**Tare Weight:** 824kg

**Temperature Range**

Minimum / Maximum	-20 °C / 40 °C
-------------------	----------------

**Notes**

**Materials**

Panel, lid and drop door - Polypropylene and-Stainless Steel

**Recommended Use / Applications**

- Food** – Dairy, sauces, flavourings and liquid ingredients
- Cosmetics** - Lipstick, creams, lotions, foundation,-mascara, eau de toilette, evening primrose oil,-balms, perfume
- Toiletries** - Shampoo & conditioner, gels, bath oils,-toothpaste, soap, mouthwash, deodorant, wet wipe-liquid,-balms, coconut oil
- Non-hazardous liquids**