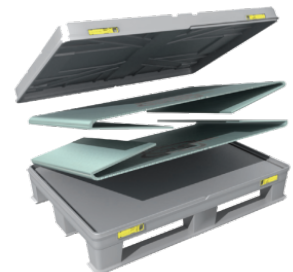
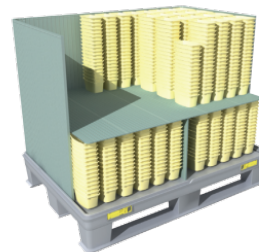
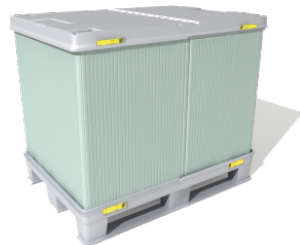


Poly-Easy-Pac (PEP)

Foldable Light-Duty Dry Container

Overview

CHEP's Poly-Easy-Pac is great for the shipping and storage of light-duty dry goods such as plastic packaging components. With its foldable sidewall, this stackable three-part-system provides exceptional volume reduction, saving up to 77% of used space in transit and in storage. Take advantage of CHEP's cost-effective, efficient and environmentally friendly collapsible dry containers for shipping and storage today.



Features and Benefits

- Storable in high rise racks
- Easy handling with high stability of light cargoes
- Simple to setup-and collapse
- Easy access to product-with-removable wall
- Interlayers for additional product safety available

Specifications

Dimensions - in millimeters

	Length	Width	Height
External	1200	1000	1280
Internal	1145	945	1055

Nominal Capacity and Weight

Maximum load weight	300 kgs
Tare Weight	39 kgs

Configuration and Stacking

Stacked layers in transit when open	2
Stacked layers for storage when open	4

Notes

Materials

- High hygienic standard due to fully welded plastic hollow section.
- Durable, reusable, twin-sheet thermoformed pallet and lid.
- Pluggable interlayers for additional product safety available.

Recommended Use / Applications

Caps, Closures, Tubs, Lids and other light-duty packaging component

Options and Accessories

Transportation to manufacturer and pick-up of empty bins
Thorough maintenance after each trip
Off-site storage when not in use

Transportation

270 pcs on a 53 ft Tractor Trailer when empty
80 pcs on a 53 ft Tractor Trailer when full