

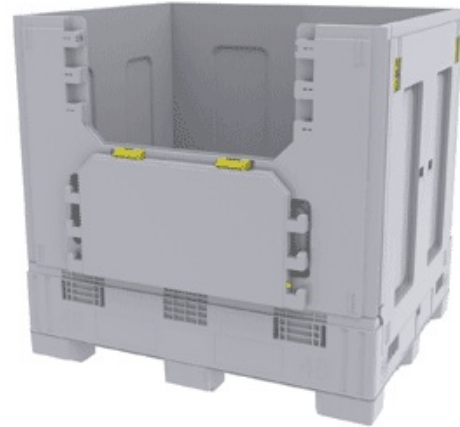
# Pallecon Collapsible Dry Container

48 x 40 x 46 inch

## Overview

The 48 x 40 x 46 inch Dry IBC provides a more reliable, environmentally friendly bulk packaging solution than cardboard alternatives. It is more durable than cardboard, ensuring better product protection.

This collapsible bulk bin has a built-in pallet and allows for superior stackability, saving customers valuable storage and transportation space.



## Features and Benefits

- Reusable: Returnable containers eliminate wasteful and costly one-way packaging disposal
- Durable: Holds more weight than cardboard
- Collapsible design: Collapses and stacks for safer storage and transport
- Simple to use: Self-standing sidewall for single-operator assembly and collapse
- Hygienic: Smooth interior walls are easy to clean and sanitize

## Specifications

### Dimensions - in inch

	Length	Width	Height
External	48.1	40.1	46.8
Internal	45	37	41
Folded	48.1	40.1	14.7

### Window / Pallet entry - in inch

	Width	Height
48.1 in side	13.6	3.4
40.1 in side	11.1	3.4

### Nominal Capacity and Weight

Maximum capacity	252.27 (UK) glns	40.50 ft <sup>3</sup>
Maximum load weight		2500 lbs
Tare Weight		183 lbs

### Configuration and Stacking

Stacked layers in transit when open	2
Stacked layers in transit when folded	7
Stacked layers for storage when open	4
Stacked layers for storage when folded	14
Return ratio	3.3 :1

## Notes

### Materials

Polypropylene, FDA-Approved, Fully Recyclable, UV Stabilized, Food Contact Approved

### Recommended Use / Applications

Great for shipping and storing dry foods like pasta and frozen pizza crusts, or retail packaging components like tubs and trays.

### Transportation Knocked Down

53 ft Tractor Trailer (open) - 60 pcs  
53 ft Tractor Trailer (collapsed with lid) - 210 pcs  
Transport Specifications available on request